

MSS, Memory module spare part



## General technical data

Product brand name		SIRIUS
Product category		Further accessories
Product designation		Memory module
Design of the product		For storage of configuration data for 3RK and 3SK2
Equipment marking acc. to DIN 40719 extended according to IEC 204-2 acc. to IEC 750		A
Equipment marking acc. to DIN EN 61346-2		K

## Certificates/approvals

General Product Approval	Functional Safety/Safety of Machinery	Test Certificates	other
	<a href="#">Miscellaneous</a>	<a href="#">Special Test Certificate</a>	<a href="#">Confirmation</a>



[Miscellaneous](#)

[Special Test Certificate](#)

[Confirmation](#)



Profibus

## Further information

**Information- and Downloadcenter (Catalogs, Brochures,...)**

<http://www.siemens.com/industrial-controls/catalogs>

**Industry Mall (Online ordering system)**

<https://mall.industry.siemens.com/mall/en/en/Catalog/product?mlfb=3RK3931-0AA00>

**Cax online generator**

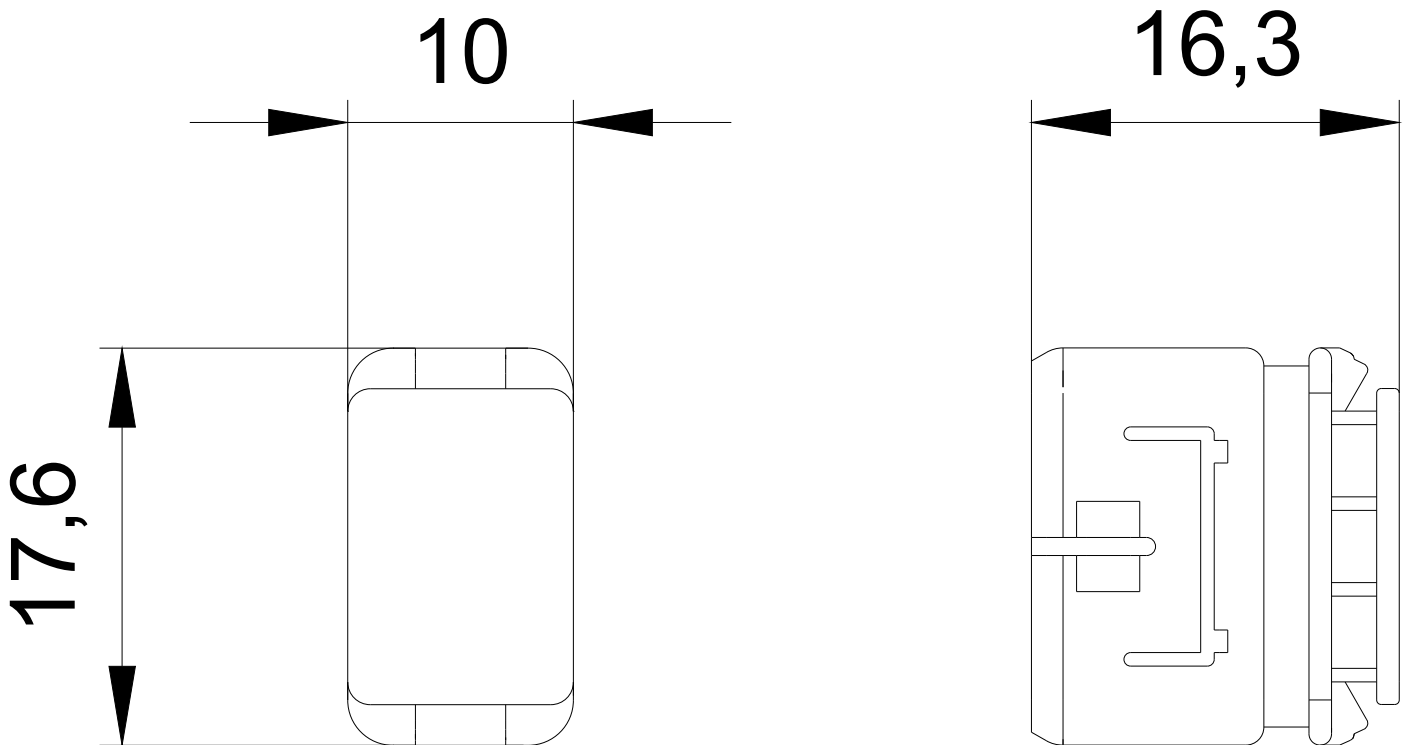
<http://support.automation.siemens.com/WW/CAXorder/default.aspx?lang=en&mlfb=3RK3931-0AA00>

**Service&Support (Manuals, Certificates, Characteristics, FAQs,...)**

<https://support.industry.siemens.com/cs/ww/en/ps/3RK3931-0AA00>

**Image database (product images, 2D dimension drawings, 3D models, device circuit diagrams, EPLAN macros, ...)**

[http://www.automation.siemens.com/bilddb/cax\\_de.aspx?mlfb=3RK3931-0AA00&lang=en](http://www.automation.siemens.com/bilddb/cax_de.aspx?mlfb=3RK3931-0AA00&lang=en)



last modified:

02/17/2018

LED module with integrated LED, soldered connection, for use on printed circuit boards



Figure similar

Product brand name	SIRIUS ACT
Product designation	LED module
Product type designation	3SU1

**General technical data**

<b>Product component</b>	
• diode	Yes
• lamp transformer	No
• Light source	Yes
• series resistor	No
<b>Insulation voltage</b>	
• rated value	30 V
<b>Degree of pollution</b>	3
<b>Type of voltage</b>	
• of the operating voltage	DC
• for actuation	DC
<b>Surge voltage resistance rated value</b>	0.8 kV
<b>Consumed current</b>	

<ul style="list-style-type: none"> <li>• maximum</li> </ul>	20 mA
<b>Protection class IP</b>	
<ul style="list-style-type: none"> <li>• of the enclosure</li> </ul>	IP40
<ul style="list-style-type: none"> <li>• of the terminal</li> </ul>	IP20
<b>Shock resistance</b>	
<ul style="list-style-type: none"> <li>• acc. to IEC 60068-2-27</li> </ul>	Sinusoidal half-wave 50 g / 11 ms
<ul style="list-style-type: none"> <li>• for railway applications acc. to DIN EN 61373</li> </ul>	Category 1, Class B
<b>Vibration resistance</b>	
<ul style="list-style-type: none"> <li>• acc. to IEC 60068-2-6</li> </ul>	10 ... 500 Hz: 5g
<ul style="list-style-type: none"> <li>• for railway applications acc. to DIN EN 61373</li> </ul>	Category 1, Class B
<b>Operating period typical</b>	100 000 h

<b>Main circuit</b>	
<b>Operating voltage</b>	
<ul style="list-style-type: none"> <li>• at DC</li> </ul>	
— rated value	5 ... 5 V
<b>Operating voltage 1</b>	
<ul style="list-style-type: none"> <li>• at DC rated value</li> </ul>	5 V
<b>Relative positive tolerance of the operating voltage</b>	20 %
<b>Relative negative tolerance of the operating voltage</b>	20 %

<b>Connections/Terminals</b>	
<b>Type of electrical connection</b>	Socket connection (THT)

<b>Lamp</b>	
<b>Type of light source</b>	LED
<b>Color of the light source</b>	yellow
<b>Light intensity</b>	900 ... 1 400 mcd

<b>Ambient conditions</b>	
<b>Ambient temperature</b>	
<ul style="list-style-type: none"> <li>• during operation</li> </ul>	-25 ... +70 °C
<ul style="list-style-type: none"> <li>• during storage</li> </ul>	-40 ... +80 °C
Environmental category during operation acc. to IEC 60721	3M6, 3S2, 3B2, 3K6 (with relative air humidity of 10 ... 95 %, no condensation in operation permitted)

<b>Installation/ mounting/ dimensions</b>	
<b>Mounting type</b>	
<ul style="list-style-type: none"> <li>• of modules and accessories</li> </ul>	Printed circuit board
<b>Height</b>	8.1 mm
<b>Width</b>	8.1 mm
<b>Depth</b>	30.6 mm

<b>Certificates/approvals</b>	
-------------------------------	--

General Product Approval				Declaration of Conformity	Test Certificates
 CCC	 CSA	 UR		 EG-Konf.	<a href="#">Declaration of the Compliance with the order</a>

Test Certificates	other
<a href="#">Special Test Certificate</a>	<a href="#">Confirmation</a>

#### Further information

**Information- and Downloadcenter (Catalogs, Brochures,...)**

<http://www.siemens.com/industrial-controls/catalogs>

**Industry Mall (Online ordering system)**

<https://mall.industry.siemens.com/mall/en/en/Catalog/product?mfb=3SU1401-3BA30-5AA0>

**Cax online generator**

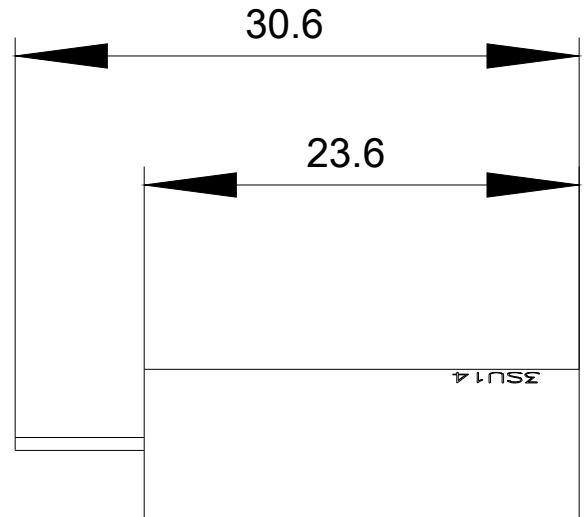
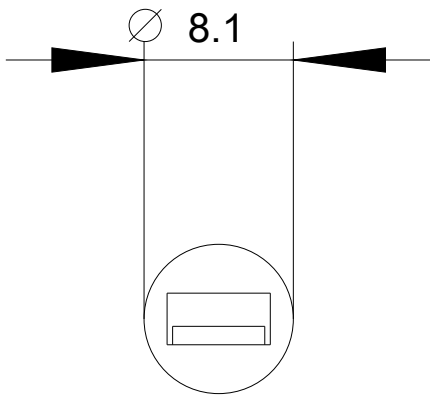
<http://support.automation.siemens.com/WW/CAXorder/default.aspx?lang=en&mfb=3SU1401-3BA30-5AA0>

**Service&Support (Manuals, Certificates, Characteristics, FAQs,...)**

<https://support.industry.siemens.com/cs/ww/en/ps/3SU1401-3BA30-5AA0>

**Image database (product images, 2D dimension drawings, 3D models, device circuit diagrams, EPLAN macros, ...)**

[http://www.automation.siemens.com/bilddb/cax\\_de.aspx?mfb=3SU1401-3BA30-5AA0&lang=en](http://www.automation.siemens.com/bilddb/cax_de.aspx?mfb=3SU1401-3BA30-5AA0&lang=en)



last modified:

01/30/2018

Flat ribbon cable, 7 cores Length 5 or 10 m

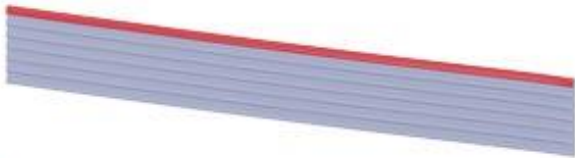



Figure similar

<b>Product brand name</b>	SIRIUS ACT
<b>Product designation</b>	Flat ribbon cable
<b>Design of the product</b>	7 cores, length 5 or 10 m
<b>Product type designation</b>	3SU1
<b>Accessories</b>	
<b>Material of accessory</b>	Plastic
<b>Color of accessory</b>	gray
<b>Certificates/approvals</b>	

General Product Approval			Declaration of Conformity	Test Certificates	
 CSA	 UL		 EG-Konf.	<a href="#">Declaration of the Compliance with the order</a>	<a href="#">Special Test Certificate</a>

**other**

[Confirmation](#)

**Further information**

**Information- and Downloadcenter (Catalogs, Brochures,...)**

<http://www.siemens.com/industrial-controls/catalogs>

**Industry Mall (Online ordering system)**

<https://mall.industry.siemens.com/mall/en/en/Catalog/product?mlfb=3SU1900-0KQ80-0AA0>

**Cax online generator**

<http://support.automation.siemens.com/WW/CAXorder/default.aspx?lang=en&mlfb=3SU1900-0KQ80-0AA0>

**Service&Support (Manuals, Certificates, Characteristics, FAQs,...)**

<https://support.industry.siemens.com/cs/ww/en/ps/3SU1900-0KQ80-0AA0>

**Image database (product images, 2D dimension drawings, 3D models, device circuit diagrams, EPLAN macros, ...)**

[http://www.automation.siemens.com/bilddb/cax\\_de.aspx?mlfb=3SU1900-0KQ80-0AA0&lang=en](http://www.automation.siemens.com/bilddb/cax_de.aspx?mlfb=3SU1900-0KQ80-0AA0&lang=en)

last modified:

01/30/2018